



anchor industries



March, 2011

Anchor Industries Leads The Industry In Toyota Application Coverage

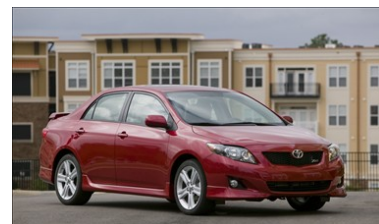
As a first to market supplier, Anchor Industries remains vigilant in our commitment to be the industry market coverage leader for all vehicles including Domestic, Asian and European applications. Toyota is currently the 3rd largest supplier of cars & light trucks in the U.S. and has over 15.3% market share. Over 1,763,500 million vehicles were sold in the U.S. for 2010. (based on Ward's Auto data).

Anchor has added **23 new numbers** that are now available for Toyota cars & light trucks which account for **over 6,611,260 total applications** (based on Polk data).

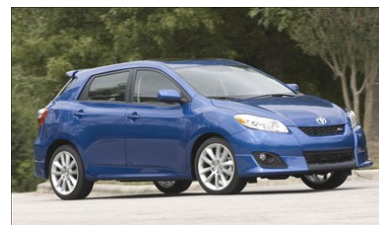
New Late Model Toyota Vehicle Applications Include:

Part Number	Vehicle	Years	Location
9390	Toyota Corolla & Matrix 1.8L Pontiac Vibe 1.8L	2009-2010	Transmission
9391	Toyota Corolla & Matrix 1.8L Pontiac Vibe 1.8L	2009-2010	Engine Front
9400	Toyota Corolla & Matrix 1.8L Pontiac Vibe 1.8L	2009-2010	Engine Rear
9419	Toyota Corolla & Matrix 2.4L Pontiac Vibe 2.4L	2009-2010	Engine Front
9421	Toyota Avalon 3.0L Lexus ES300 3.0L	1999-2004	Engine Rear
9425	Toyota FJ Cruiser 4.0L 4Runner 4.0L	2003-2010	Transmission
9429	Toyota Tacoma 4.0L	2005-2010	Transmission
9430	Toyota Tacoma 4.0L	2005-2010	Transmission
9436	Toyota Corolla & Matrix 2.4L Pontiac Vibe 2.4L	2009-2010	Engine Rear
9447	Toyota Corolla & Matrix 2.4L Pontiac Vibe 2.4L	2009-2010	Engine Front
9449	Toyota Corolla & Matrix 1.8L Pontiac Vibe 1.8L	2009-2010	Engine Front
9454	Toyota Prius 1.5L	2004-2009	Torque Strut
9462	Toyota Corolla & Matrix 2.4L	2009-2010	Transmission

All new number application data is also available electronically in both Activant and Wrenhead/WHI Solutions. For more details on all these applications along with our complete program availability, please contact your local Sales Representative or call our **Customer Service Department direct at: 800-444-4616.**



Toyota Corolla



Toyota Matrix



Toyota Matrix



Toyota 4Runner



Toyota Tacoma

The Most Trusted Name In Engine & Transmission Mounts Since 1933!

